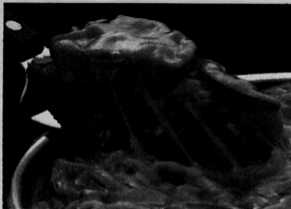


Impossible Cheeseburger Pie



1 pound ground beef
1 ½ cups chopped onion
½ teaspoon salt
¼ teaspoon pepper
1 ½ cups milk

3 eggs
¾ cup Bisquick® baking mix
2 tomatoes, sliced
**1 cup shredded Cheddar or
process American cheese**

Heat oven to 400°. Grease pie plate, 10x1½ inches. Cook and stir ground beef and onion in 10-inch skillet over medium heat until beef is brown; drain. Stir in salt and pepper. Spread in plate. Beat milk, eggs and

baking mix until smooth, 15 seconds in blender on high or 1 minute with hand beater. Pour into plate. Bake 25 minutes. Top with tomatoes; sprinkle with cheese. Bake until knife inserted in center comes out clean, 5 to 8 minutes. Cool 5 minutes. 6 to 8 servings.

High Altitude Directions (3500 to 6500 feet): Increase first bake time to 30 minutes.

© Reg. T.M. of General Mills, Inc.